

EXISTING CONDITIONS.
Contractor must visit the site and familiarize with existing conditions prior to bidding. There is work involved in areas outside the space. Contractor shall coordinate such work, minimize disruptions and bring those areas to the same condition it was prior the work was performed.

This item has been digitally signed and sealed by Alejandro Ramirez, PE on: see seal date
Printed copies of this document are not considered signed and sealed and the signature must be verified on any electronic copies.
Alejandro Ramirez, PE 52742

Received after DRC Meeting to address DRC comments prior to the submission of a Building Permit Application.

08/12/2025

No.	Description	Date

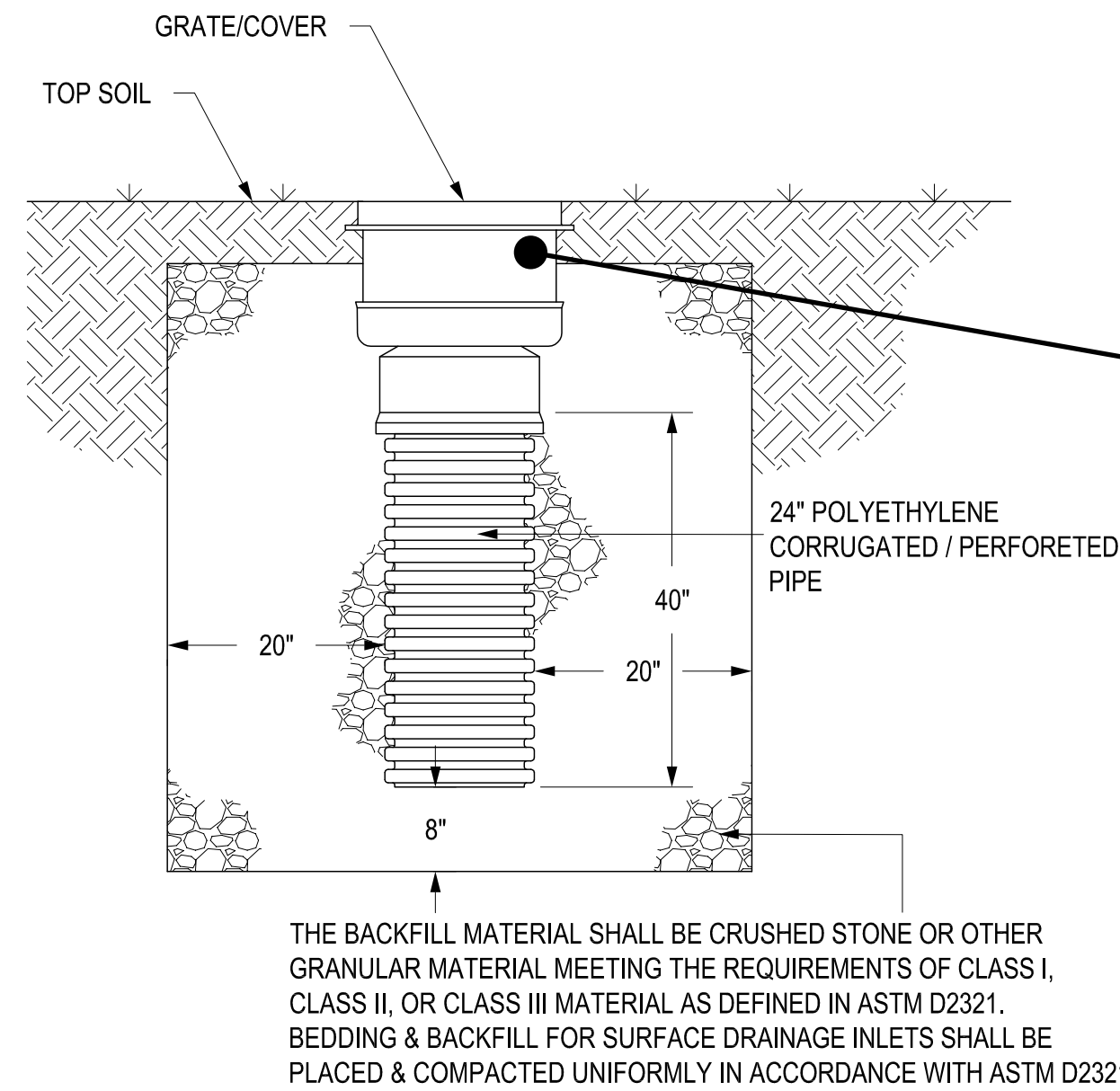
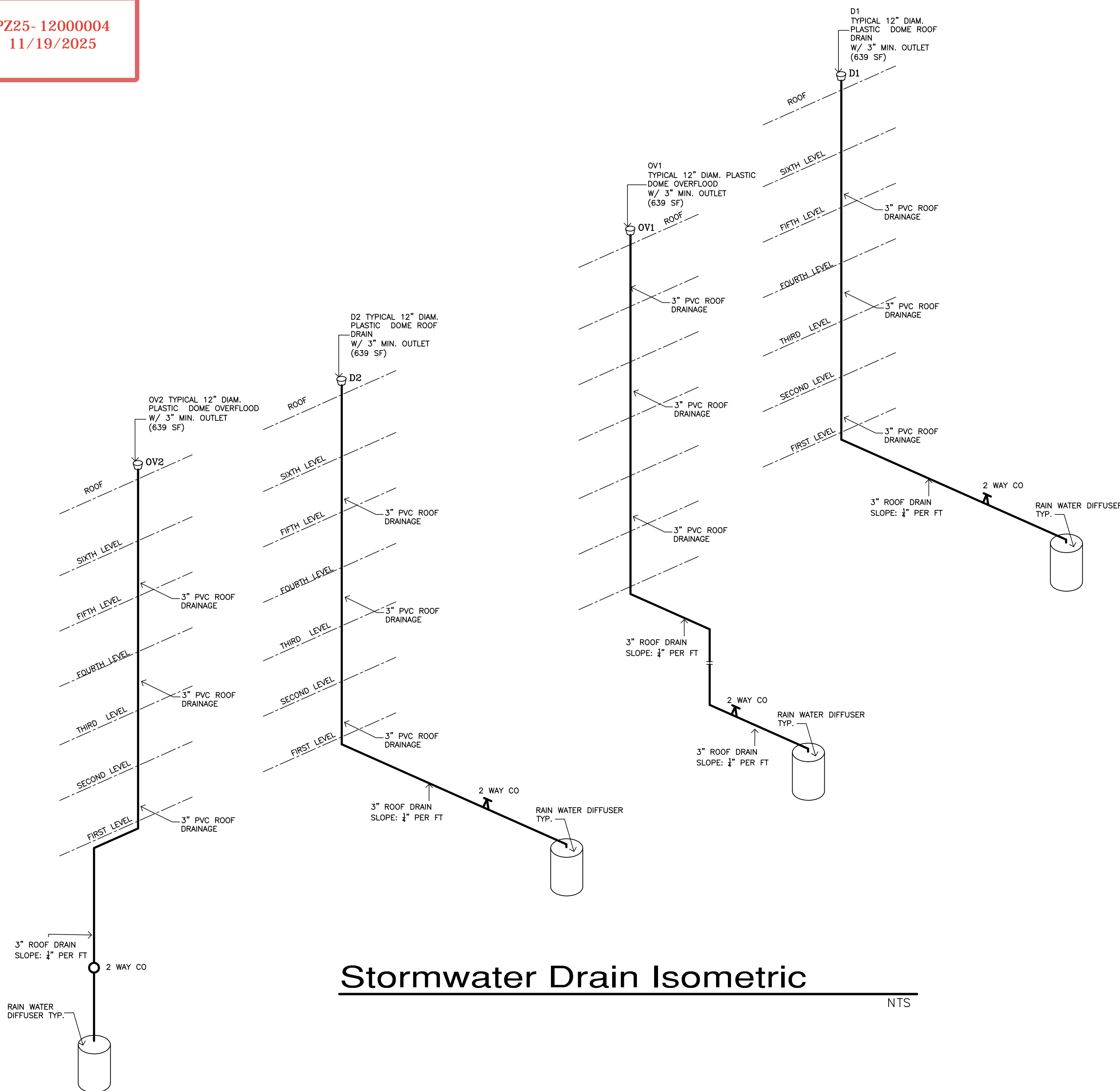
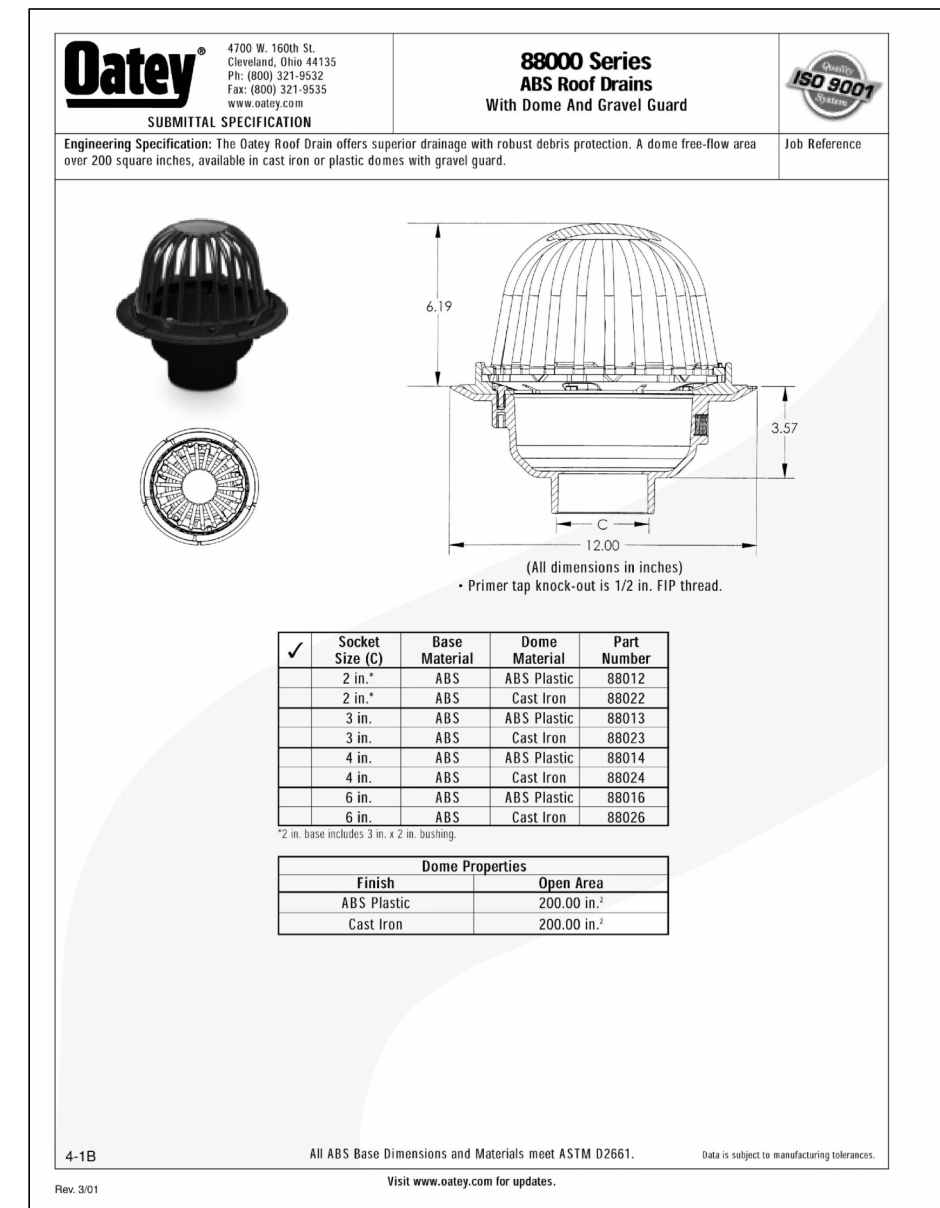
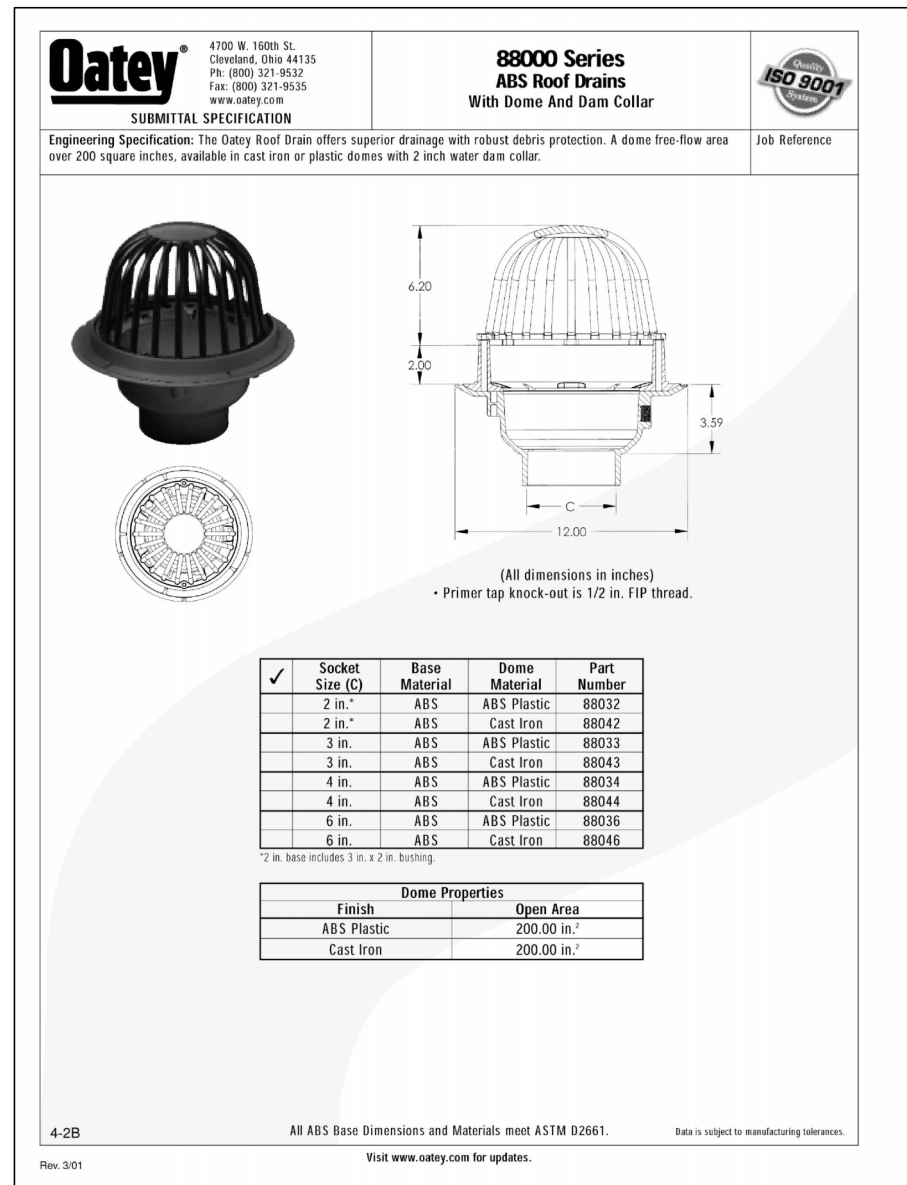
Proposed
Mausoleum
Building
At
Forest Lawn
Memorial
Gardens

200 WEST COPANS ROAD
POMPANO BEACH
FLORIDA

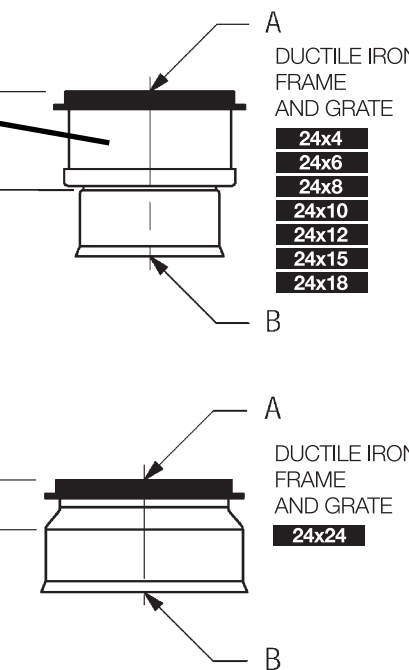
Project number 2024-05
Date December 14, 2024

P-2

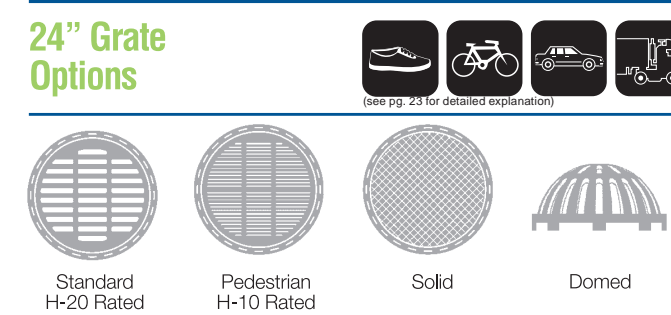
Scale 1/4"=1'-0"



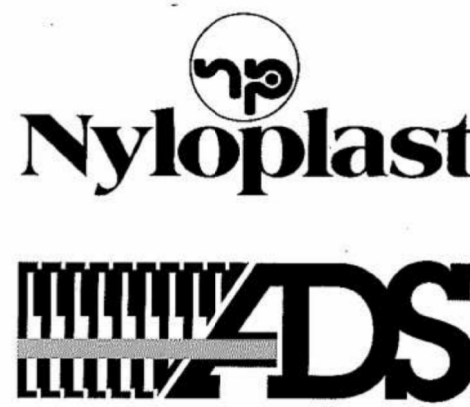
Part/Prefix	Product Description	Available Outlets
2724AG...X	24" Inline Drain	4" thru 24"



A	B	C
24"	4"	15.00"
24"	6"	15.00"
24"	8"	15.00"
24"	10"	15.00"
24"	12"	15.00"
24"	15"	15.00"
24"	18"	10.00"
24"	24"	10.25"



Grate Specifications for Inline Drains and Drain Basins			
8"		Inlet Area Standard: 20.3 sq. in. Domed style: N/A	Slot Size (Min.) 0.51" N/A
10"		Inlet Area Standard: 29.7 sq. in. Domed style: N/A	Slot Size (Min.) 0.43" N/A
12" & 15"		Inlet Area Standard H-20 Rated: 12": 62.7 sq. in. 15": 92.5 sq. in. Pedestrian H-10 Rated: 12": 51.0 sq. in. 15": 79.3 sq. in. (12" and 15" grates are square and hinged to base.)	Slot Size (Min.) 1.13" 1.13" .375" .375"



RAIN WATER DIFFUSER
SCALE: N.T.S.